

UX600:

- » Equipped with proven mechanical swiveling rotary
- » Table for working capacity up to
- » Ø630 x 425 mm / 300 kg (Economic Version)
- » Ø600 x 430 mm / 300 kg
- » Ø640 x 440 mm / 500 kg
- » Modular structure designed on UX600, UX730Dyn
- » All models use the same base, column, cross slider & ATC unit.
- » Major difference are spindle head & A/C axes table.



Control: (F) = FANUC(T) = HEIDENHAIN (S) = SIEMENS

Technical data	UX600		
	Economic Version		
	Multi face	5 Axes	
Spindle code	12C		
Work range			
Table size (mm)	Ø500		
Travel	X (mm)	885 (+580~-305)	
	Y (mm)	800 (+375~-425)	
	Z (mm)	500	
	A (degree) / C (degree)	+30°~ -120° / 360° (Continuous)	
Max. swing (mm)	Ø630		
Table surface to spindle nose (mm)	160 ~ 660		
Spindle nose to tilting center at 90°	160 ~ 660		
Max. work piece size (mm)	Ø630 x 425		
Table load capacity (kg)	300		
Feed drive			
Feed force	X / Y / Z (N)	11,519 / 11,519 / 11,519 (F) 13,700 / 13,700 / 13,700 (T)	
Rapid movement	X / Y / Z (m / min) A / C (min ⁻¹)	36 / 36 / 36 A = 11.1 / C = 16.6	
Acceleration	X / Y / Z (m/š)	3 / 4 / 4 (F) 3 / 4.5 / 4.5 (T)	
Dia. & pitch of the ball screw	Ø45 / P = 12 / 12 / 12		
Accuracy Positioning / Repeatability			
ISO 230-2	.008 / 0.004		
JIS 6338 (300 mm)	±0.003 / ±0.002		
VDI3441	.008 / 0.004		
Main spindle			
Spindle taper	BBT 40		
Max. spindle speed	12,000		
Spindle base speed	F	1,500	-
	T/ S	1,500 /-	1,500 /-
Spindle output KW (S6-25%)	F	15 ⁽³⁾	-
	T/ S	27.5 /-	27.5 /-
Spindle torque Nm (S6-25%)	F	96 ⁽³⁾	-
	T/ S	133 /-	133 /-
Spindle transmission	Coupling		
Spindle diameter (mm)	Ø80		

Continued »

Control: (F) = FANUC(T) = HEIDENHAIN (S) = SIEMENS

Technical data	UX600	
	Economic Version	
	Multi face	5 Axes
Spindle code	12C	
Tool changer	Random	
Tool selection	Random	
Magazine positions	30 (std.) 48/60 (opt.)	
Max. tool diameter (mm)	76.2	
w/o adjacent tool (mm)	125	
Max. tool length (mm)	280	
Max. tool weight (kg)	7	
CTC time-ISO 10791-9 (sec.)	8 (F) 7.7(T)	
Coolant system	400	
Coolant tank capacity (Liter)	400	
Pump capacity ⁽¹⁾	60 L / min., 3.5 bar	
- Nozzle coolant	60 L / min., 3.5 bar	
- Through spindle coolant	25 L / min., 20 bar	
- Wash down	60 L / min., 3 bar	
Machine size	3,280	
Height (mm)	3,280	
Floor space W x D (mm)	4,050 x 3,800	
Weight (kg)	12,100	
Connections	220 V / 60 Hz or 400 V / 50 Hz	
Main power	220 V / 60 Hz or 400 V / 50 Hz	
Power consumption (KVA)	30 (F) 35(T)	

Note: ⁽¹⁾At 60Hz. ⁽²⁾(S6-40%) ⁽³⁾(S3-25%)

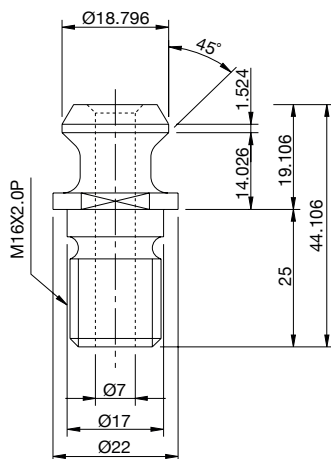
Standard / Option accessories	UX600	
	Economic Version	
	Multi face	5 axes
Spindle code	12C	
■ QUASER mill i (4+1 Axes)	●	×
■ HEIDENHAIN TNC620 (4+1 Axes)	○	×
■ HEIDENHAIN TNC640 (5 Axes)	×	●
■ HEIDENHAIN Software option2	×	●
■ SIEMENS 840D	×	×
■ Spindle oil chiller	●	●
■ 12,000 min ¹ SC-4.2 coupling spindle	●	●
■ 9,000 min ¹ GB-4.1R belt spindle	×	×
■ 12,000 min ¹ GB-4.1R belt spindle	×	×
■ 15,000 min ¹ GC-4.0R / MC-4.1R coupling spindle	×	×
■ 24,000 min ¹ GM-4.0A motor spindle	×	×
■ 18,000 min ¹ GM-4.1A motor spindle	×	×
■ 40 taper / 30 position tool magazine	●	●
■ 40 taper / 48 position tool magazine	○	○
■ 40 taper / 60 position tool magazine	○	○
■ Pull stud for BT tooling system	○	○
■ X / Y / Z linear scale & C rotary encoder	○	○
■ Rotary encoder on A axes	●	●
■ Coolant through ball screw	○	○
■ Thermal compensation	○	○
■ Coolant system	●	●
■ 20 bar through spindle coolant	●	●
■ Coolant wash gun	●	●
■ Coolant wash down	●	●
■ Chip conveyor	●	●
■ Chip augers	●	●
■ Cutter air blast	●	●
■ Stainless steel chip pan & chip channel	●	●
■ Work light	●	●
■ Machine status light	●	●
■ CE & EMC/ GB	○	○
■ 2 Port through table	○	○
■ Reference rod (for thermal comp with probe)	○	○
■ Laser tool measuring system	○	○

Note: * Standard for Eu area.

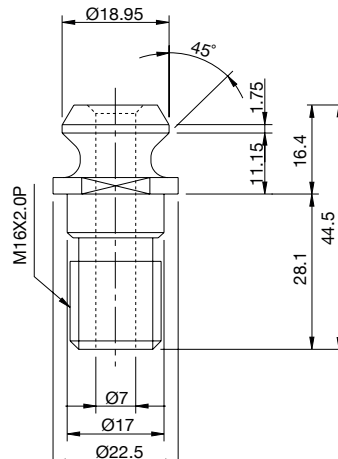
- Machine specification might be different from the catalog if there is any specification update.

Pull stud and applicable tools:

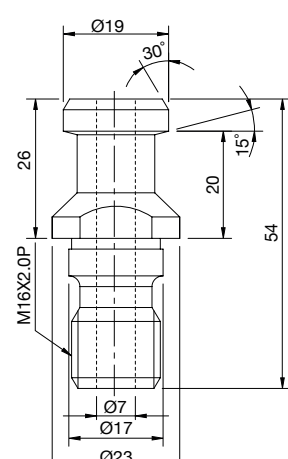
BT 40 (QUASER SUPPLY)



ISO (7388-B)



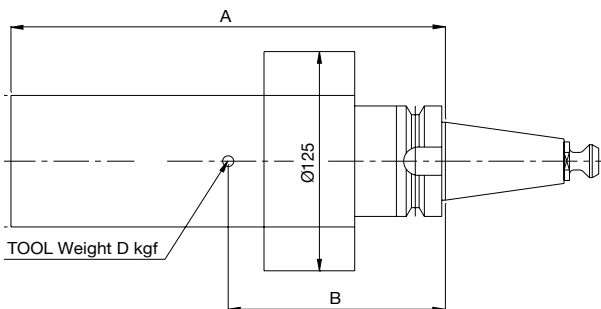
DIN (69872-A)



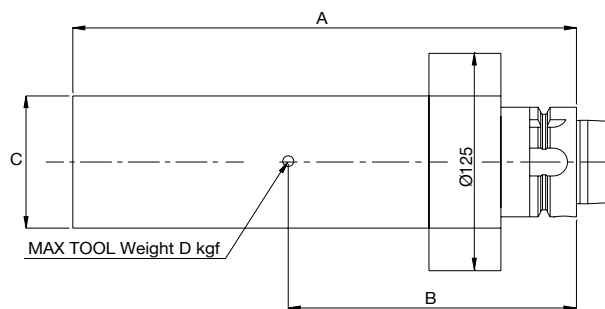
● = Standard ○ = Option × = N / A

UX600					UX730 Dyn		
5 axes							
9B	12B	15C	18A	24A	15C	18A	24A
×	×	×	×	×	×	×	×
×	×	×	×	×	×	×	×
●	●	●	●	●	●	●	●
●	●	●	●	●	●	●	●
○	○	○	○	○	×	×	×
●	●	●	●	●	●	●	●
×	×	×	×	×	×	×	×
●	×	×	×	×	×	×	×
×	●	×	×	×	×	×	×
×	×	●/○	×	×	●/○	×	×
×	×	×	×	●	×	×	●
×	×	×	●	×	×	●	×
×	×	×	×	×	×	×	×
●	●	●	●	●	●	●	●
○	○	○	○	○	○	○	○
●	●	●	×	×	●	×	×
○	○	○	○	○	●	●	●
●	●	●	●	●	●	●	●
●	●	●	●	●	●	●	●
●	●	●	●	●	●	●	●
●	●	●	●	●	●	●	●
●	●	●	●	●	●	●	●
●	●	●	●	●	●	●	●
●	●	●	●	●	●	●	●
●	●	●	●	●	●	●	●
●	●	●	●	●	●	●	●
○	○	○	○	○	○	○	○
●	●	●	●	●	●	●	●
●	●	●	●	●	●	●	●
○	○	○	○	○	○	○	○

A	tool length
B	tool median point(A/2)
C	tool diameter
D	tool weight
MOMENT=D*B(≤10.29N-m)	

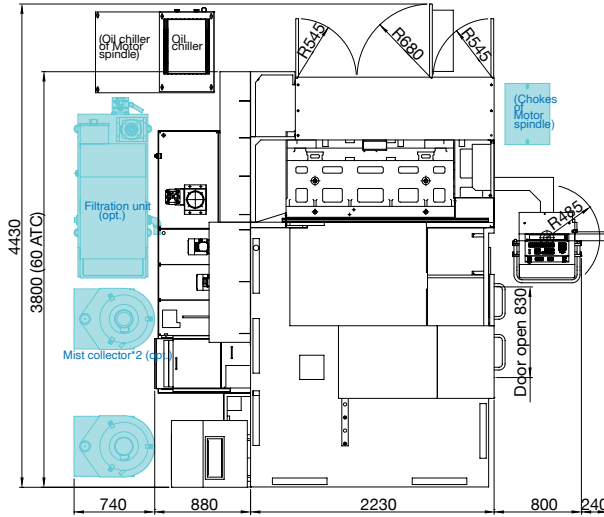


A	tool length
B	tool middle point(A/2)
C	tool diameter
D	tool weight
MOMENT=D*B(≤9.85N-m)	



Installation dimensions:

UX600 UX730Dyn



	UX600	UX730
A	1,024	978

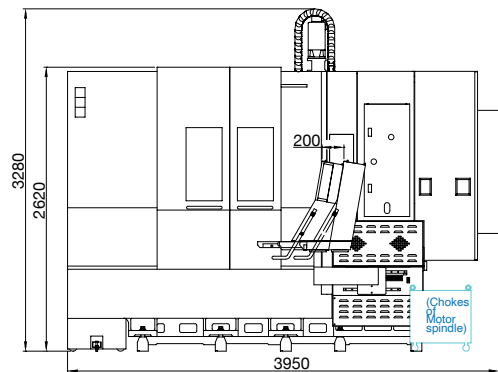
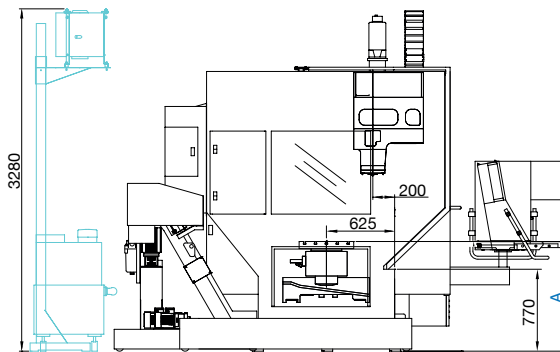
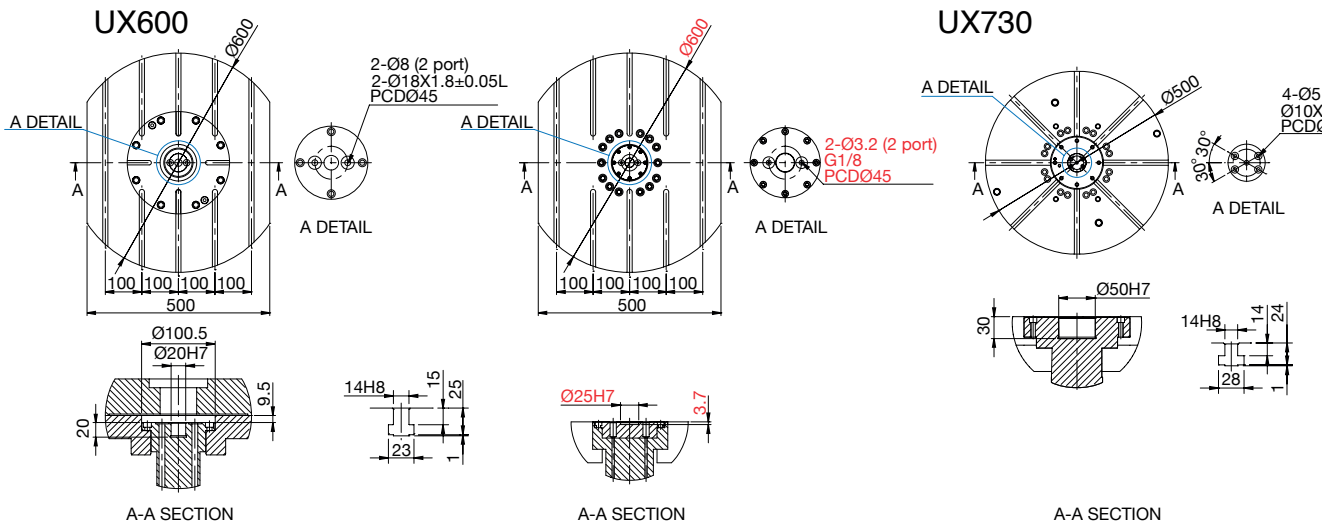


Table dimensions:



Note: Content in red for Europe only.