

MACHINE SPECIFICATIONS

MODEL		UNIT	G6i
STANDARD LINEAR AXES	X axis	mm	650
	Y axis	mm	850
	Z axis	mm	500
STANDARD ROTARY AXIS	Table diameter	mm	Ø 600
	Table load	kg	600
	A axis driven system	Swivelling	Dual torque motors
	C axis driven system	Rotary	Torque motor
STANDARD AXIS DRIVE	Ballscrew pitch		12
	Maximum Feedrate	m/min	36
	Guideways	mm	45 – roller type
	Lubrication type		Grease
	Double driving system in Y axis	Gantry	STD
STANDARD SPINDLE	Driven system		Built in
	Maximum speed	rpm	20,000
	Power S1/S6 (40%)	kW	25/32
	Torque S1/S6 (40%)	Nm	86.8/111.8
	Interface		HSK-A63
	Bearing lubricant		Oil air
	Water chiller ±0.2 degree		STD
STANDARD ATC	Magazine capacity	Tools	80
	Smart tool load station		STD

All specifications are subject to change without prior notice.

See overleaf for standard value-added functions & ART™ monitoring system.

G6i Specifications



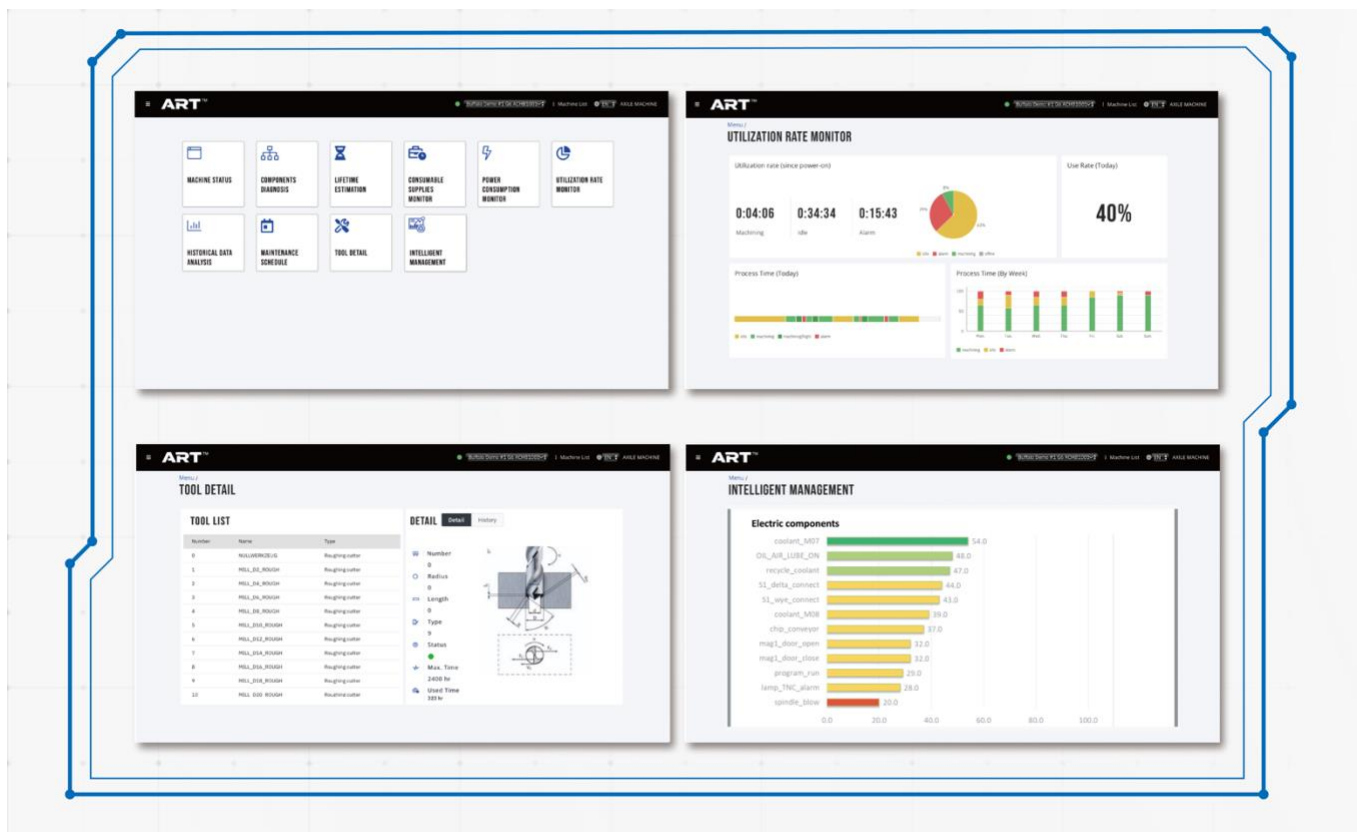
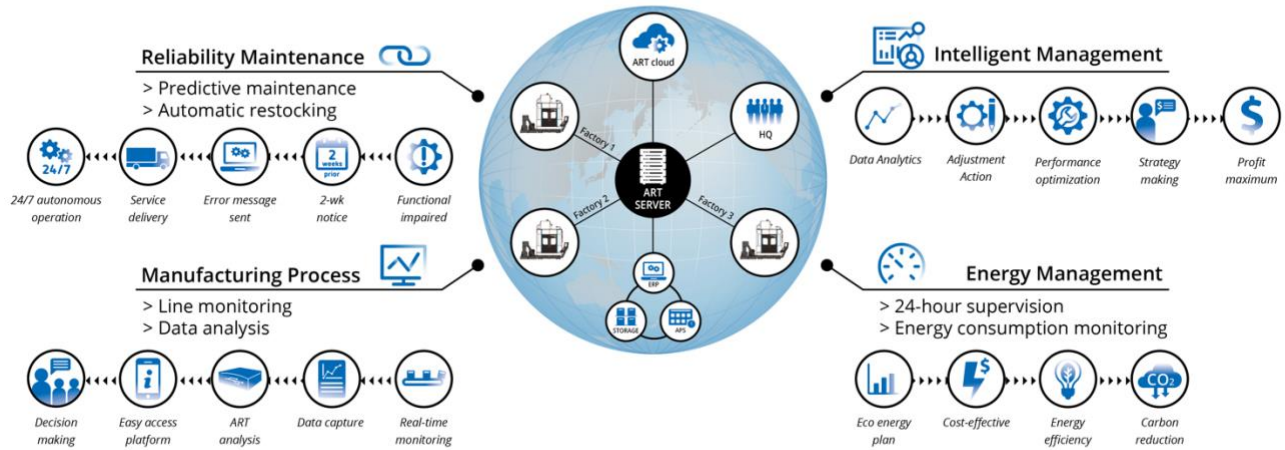
AXILE - Digital

MODEL		UNIT	G6i
STANDARD VALUE-ADDED FUNCTIONS	3 x hydraulic + 1 x pneumatic port interface on A/C table		STD
	40um filter for hydraulic tank		STD
	Automatic roof for overhead crane loading		STD
	Air through spindle (wet/Dry rotary union) with solenoid to adjust air pressure		STD
	Linear scales for X/Y/Z axis		STD
	EMC + Safety module for CE regulations		STD
	LED signal lamp with 3 colours		STD
	Electrical parts preparation for BLUM laser tool setter		STD
	SMT function - TPC - Tool-tip Positioning Control		STD
	SMT function - SVS - Spindle Vibration Supervision		STD
	SMT function - AAC - Axial Accuracy Control		STD
	DCM function (Dynamic Collision Monitoring) Only applicable with Heidenhain control.		STD
	Levelling pad (height adjustable)		STD
	ART system, including: - ART™ App - Heidenhain RemoTools SDK - Microsoft VISUAL STUDIO 2019 Pro - Vibration sensors and amplifiers for lubricator - Bearing force sensors for axes - Charge amplifiers - Smart sensor for energy management - ifm AS-i or IO link for sensors - ART™ analyser (IPC) - 2nd monitor		STD

All specifications are subject to change without prior notice.

See overleaf for standard value-added functions & ART™ monitoring system.

ART™ Intelligent monitoring & management



RELIABILITY MAINTENANCE (RM)
Unexpected downtime is the enemy of profitability. ART™ delivers machine component diagnostics, machine lifetime estimation and consumables supply monitoring to prevent machine failure and eliminate unplanned downtime.

MANUFACTURING PROCESS (MP)
Knowledge is power. ART™ achieves superior data collection and analytics on machine status and utilisation rate, to deliver real-time information for optimised production strategies.

ENERGY MANAGEMENT (EM)
Every penny counts. ART™ enables manufacturers to monitor their power consumption, to identify ways to maximise energy efficiency and reduce expenditure.

INTELLIGENT MANAGEMENT (IM)
ART™ provides analytical information for managers to understand the machine performance and take immediate action to optimise the machines capacity.